

The Happenings!

*January 2009
Volume 26, Issue 1*



*In this Issue:
New Year's Day- Jan 1
Sierra Club -- San Diego Chapter Singles Section*

From the Board:

The Christmas Party was a great success! Everyone seemed to enjoy themselves. A jacket was left with a name tag of Mary Kennedy on it. If this is yours, please email me at escalagal@san.rr.com and I will see it gets returned to you.

Sierra Singles continues to attract new members thanks to the efforts of all our members. Happy New Year!

DEC 31, WED, COWLES MOUNTAIN 6:30 HIKE FROM BARKER WAY
Leader: Diane Purkey 619-865-8598- Assistant: Robert Burroughs M4B
Abs? What are abs? Where? Oh, they're hidden abs. Hike now, celebrate later. Join us on this fun, fast-paced evening conditioning hike up the trail less traveled to the top of Cowles Mountain. We'll cover very basic astronomy at the summit, with our great view of the night sky, then loop back down on the dirt fire road. Bring your flashlight and a light jacket. Main Chapter event.



JAN 1, THU, 8:30 AM SHARP!

NEW YEAR'S DAY RIDE TO THE OCEAN

Leader: Bev Barrett All Events for the day start at Bev and Terry's House in Kensington, 4362 Argos Drive, San Diego. Call only if you must: 619 282-0425. 3-B-S

Begin the New Year with friends riding from Kensington to Ocean Beach, looping around the harbor, and returning through America's Finest City. Bev, a Native, will point out 12 Neighborhoods and share origins of their names. Meet at 8:30 am at Bev and Terry's house (see directions below). Moderate 20+ miles with less than 1000 ft elevation gain. Rain cancels.

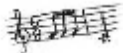


JAN 1, THU, 11 AM,

KENSINGTON NEIGHBORHOOD WALK

Leader: Bev Barrett. All Events for the day start at Bev and Terry's House in Kensington, 4362 Argos Drive, San Diego. Call only if you must: 619 282-0425. E5A

Meet at Bev and Terry at 11:00 am. This year's walk will leave Bev and Terry's house (see directions below) in Kensington for a foot tour of this historic and beautiful S.D. neighborhood. We will continue to point out and acknowledge the neighbors who have moved to conserving water via water conserving landscaping. This is an easy walk of less than 4 miles and is flat. Bev and Terry will do their best to point out significant landmarks and to provide a little local history. Bring water, jacket (only a downpour will stop us), and wear appropriate shoes.



JAN 1, THU, 1-5 PM,

BLACK-EYED PEA AND GREEN FEED WITH A CONCERT

IN THE CANYON

Join Bev, Terry and their lucky and wealthy relatives and friends for the annual New Year's Day black-eyed pea and greens feed. Bev Barrett and Terry Frey (619) 282-0425 (pls. don't phone unless you must). According to Southern Tradition eating peas and greens on the first day of the year will assure you luck and wealth. This event happens every year and brings together 100+ great human beings. Bring a beverage and a dish for the food table (lawn chair optional). We will be having music this year for a Concert in the Canyon, from 2-4 pm. An optional bike ride and a neighborhood walk will precede this event. All events for the day start at Bev and Terry's house in the Kensington neighborhood of San Diego. See directions to house written below.

Directions to Bev and Terry's House:

All Events for the day start at Bev and Terry's House in Kensington, 4362 Argos Drive, San Diego. Call only if you must: 619 282-0425. From Highway 15 take Adams Ave Exit and proceed east to Marlborough and turn left. Proceed one block to Alder and turn right. Go several blocks and turn left on Hart. Go one block turn right on Argos you will see 4362 (white two-story house on the left side of the street WITH THE NEW SOLAR PANELS ON THE GARAGE ROOF!). Park on the street, but do not block neighbor's driveways.



JAN 4, SUN, 1 PM, VOLLEYBALL

Host: Bob Hanson 619-287-7844 Everyone is welcome. We have 2 nets, one for advanced play, and the other for everyone. Come enjoy the sun, fun, fresh air and a little friendly competition at De Anza Cove. Directions: I-5 to Clairemont Dr., A few hundred feet west is Mission Bay Dr., turn right. Go to the next stop sign, turn left into the parking lot. We'll be on the grass past the NW corner of the parking lot. Look for the Sierra club banner.



JAN 5, MON, 6:30-7:30PM

SIERRA SINGLES ORIENTATION

A great way to find your niche in the club- Presentation features Sierra Singles events and activities. Discussion of activities and questions answered. No reservations needed. For more info, call E. L. Lotecka, elguide1@gmail.com , 760.533.2725 Volunteer opportunities available! SerraMesa-KearnyMesa Branch Library, 9005 Aero Dr., San Diego CA 92123. Newcomers welcome.



JAN 7, WED, 9AM

WED IN MTNS- ENCINITAS SOUTH

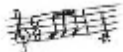
Leader: Mac Downing, MacDowning@yahoo.com 858-490-0583 Assistant: needed E7A
Beach walk into Solana Beach. Avoid winter in the mountains. Bring water, lunch, and comfortable hiking shoes or boots. We meet at 9 am in Encinitas, Moonlight Beach, at the parking lot at Third and C. Thomas 1147-B7. Rain or drizzle cancels. Main Chapter event.



JAN 9, FRI, 6PM,

POTLUCK & MOVIE NIGHT

Potluck 6pm & Movie 630pm Movie - A Question of Power Produced by concerned citizens opposed to a 150 mile transmission line called the Sunrise Powerlink, this compelling documentary is a crash course on electricity, the role of business and profits, sustainable and affordable alternatives, environmental protection and global warming. The film shows how ordinary people have joined forces and taken extraordinary actions to change the energy future of Southern CA. Chapter HQ – 8304 Clairemont Mesa Blvd. #101 (We have a zero waste policy so please bring your own non-disposable plate, cup, napkin, and utensils; pack it in & pack it out) Main Chapter event. Sponsor: International Committee Contact: Jean Costa 619-463-0721



JAN 10, SAT, 7:30PM

HOUSE CONCERT: THE EVE SELIS BAND

Host: Carol Branch 858-452-1539 wonderwoman@san.rr.com Co-host: Jeff Thayer
TYPE OF MUSIC: Americana, Folk Music, Roadhouse Rock. Eve and her band are well known and loved in San Diego and abroad. Each musician in the band is a virtuoso, including two of the best guitarists in the county, and Eve's voice and original songs are unique and beautiful. THEY ROCK! They will put on a great show for you. You will love the intimate setting of the private home venue. Doors open at 7; music starts promptly at 8. Finger food snacks and beverages provided. Potluck contributions are optional. Recommended donation: \$20.00 at the door. CASH ONLY, PLEASE. CD's will be available for purchase. Reservations required. Call or e-mail for reservations and details. Performer's website: <http://www.eveselis.com>



JAN 10, SAT, 9 AM

COASTER SATURDAY TORREY PINES EXTENSION

Ldr: Mac Downing 858 490-0583 MacDowning@Yahoo.com Asst: COL Needed M4A
Walk visits the eastern natural area saved in 1964 – 1970. Varied terrain and ocean views. Bring water, optional sack lunch, and boots or walking shoes. Meet 9 am east end of Del Mar Scenic PKWY, off Carmel Valley Road, Thomas 1207-G1. Reservations required, limited to 20, prefer Email. Rain cancels. Open to Main Chapter.



JAN 11, SUN,

RABBIT PEAK FROM THE NORTH

Leader: Mark Brown mrbrown@san.rr.com Assistant: Byron Cook V18E
Welcome to desert hiking season and the SECOND ANNUAL (this time FULL MOON) RABBIT FROM THE BACK FULL THROTTLE SUFFER-FEST. This is listed as the most strenuous hike on the HPS list. We will be going up a ridge from the "Indio" side of the mountain. Almost all cross country with relentless elevation gain (6700'). This "advanced" hike is open only to the hardest and most experienced who've gone on some of my earlier hikes and don't mind emerging from pitch blackness (oh, I forgot, that's why the moon) only to be lost in lemon groves upon returning. Main Chapter event



JAN 11, SUN, 1 PM, VOLLEYBALL

Host: Bob Hanson 619-287-7844 Everyone is welcome. We have 2 nets, one for advanced play, and the other for everyone. Come enjoy the sun, fun, fresh air and a little friendly competition at De Anza Cove. Directions: I-5 to Clairemont Dr., A few hundred feet west is Mission Bay Dr., turn right. Go to the next stop sign, turn left into the parking lot. We'll be on the grass past the NW corner of the parking lot. Look for the Sierra club banner.



JAN 12, MON, 6:30-7:30PM

SIERRA SINGLES BOARD MEETING

All interested persons and members are welcome! This is a new location; 8304 Clairemont Mesa Blvd., Room 105, 1 block west of 163 interchange on the north side of Clairemont Mesa Blvd. This room is next to the Main Chapter office. Board members will brown bag around 6 PM or come to the meeting at 6:30. Here's your chance to share your ideas for the Singles Section. The meeting is primarily business rather than social (but enjoyable!) No reservations needed. We need Board members, secretary, vice-chairperson, editor. Volunteers welcome willing to help several hours a month. Contact Gary at Sc9members1@aol.com for more information.



JAN 13 (MISSION VALLEY, \$130), or JAN 20, (ESCONDIDO, \$100),

WILDERNESS

BASICS COURSE

This comprehensive 10-week course consists of 10 Tuesday night meetings and 4 weekend trips out to the local deserts and mountains. The weekend trips includes car camping, navigation, backpacking, and even snow camping. There are a wide range of trips to choose from, ranging from easy to extremely challenging. For more information visit www.wilderness_basics.com or <http://sandiego.sierraclub.org/wbc> or call Lance at 858.467.5074 (Mission Valley classes) or Jeff at 760.728.8220, (Escondido classes) Main chapter event.



JAN 17 SAT, 9 AM

BALBOA PARK

Leader: Carol Stultz cestultz@san.rr.com 858 945-4966 Assistant: David Frost E5A
See lush native plants and erosion damage as we walk through Florida Canyon, then on east side of Florida Dr. see beautiful non-native plants alongside the Kate Sessions Nursery (over 100 years old), pass by Balboa Park Golf Course and visit Disc Golf Course. Meet in parking lot at Balboa Park Tennis Courts at Morley Field Dr. and Upas St. (east of Florida St). Bring a quart of water, a snack, and hiking shoes (need traction for some small hills). Thomas Guide 1269 D6. Optional lunch afterwards. Heavy rain cancels. Limited to the first 20 people. Open to Main chapter.



JAN 17, SAT

FIFTH ANNUAL HIKER'S MARATHON

Leader: Jim Jafolla JimJafolla@cox.net (email preferred) 619-972-1648 Assistant: Susan McFetridge S25D
Work off those holiday carbs with a hiker's marathon! We'll start at dawn in Pine Valley and take the Noble Canyon Trail to Sunrise Hwy and then follow the PCT to Garnet Peak. This will be a brisk-paced hike so we can make it back to our cars by dusk. Bring 3 quarts water, lunch, warm clothes and sturdy shoes. Limit 12. Main Chapter event.



JAN 17, SAT, 5:30 PM

MOVIE AND DINNER

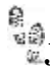
Meet inside lobby at the usual place, Mira Mesa Edwards theaters. Mira Mesa exit off the I-15. We will choose a movie and buy tix. Followed by dinner at Pat and Oscars. Meet after the movie at Pannera for dessert and coffee. Candy Brooks 619 584 9072



JAN 18, SUN, 1 PM,

VOLLEYBALL

Host: Bob Hanson 619-287-7844 Everyone is welcome. We have 2 nets, one for advanced play, and the other for everyone. Come enjoy the sun, fun, fresh air and a little friendly competition at De Anza Cove. Directions: I-5 to Clairemont Dr., A few hundred feet west is Mission Bay Dr., turn right. Go to the next stop sign, turn left into the parking lot. We'll be on the grass past the NW corner of the parking lot. Look for the Sierra club banner.

 **JAN 18, WED, 9AM, WED IN THE MTNS- SHEPPARD POND WEST OF FORTUNA AT MISSION TRAILS**

Ldr. Carol Stultz(858) 945-4966 or cstultz@san.rr.com Assistant: Merrilyn Pope M5B
Meet 9 AM at intersection of Calle de Vida and Colina Dorada Dr. in Tierrasanta (at east end of Clairemont Mesa Blvd., turn right on Rueda, left on Calle de Vida) - park on street. View and learn about SD Water Authority projects in Mission Trails. View of city, Fortuna Mountains and Suycott Wash. May follow Rim Trail or Suycott Wash, depending on closed trails wrt water projects on that day. Much loose gravel and rocks along trails. Bring 2 quarts water, hiking shoes, snack and lunch. Thomas Guide: 1250 B2. Steady rain cancels. Open to Main Chapter.

 **JAN 24, SAT, CALCITE MINE CROSS COUNTRY DAY HIKE IN ANZA BORREGO DESERT STATE PARK**

Leader: Doug Hansen hansend@cox.net- Assistant: Wanda Jackson M5B
Join us on a cross-country exploration of the Calcite Mine area in Anza-Borrego Desert State Park, including several fun slot canyons. Contact the leader for required sign-up and more information. Main Chapter event.

 **JAN 25, SUN, 10 AM SOCIAL WALK IN BURLINGAME**

Leader: E. L. Lotecka Asst Leader: Bonnie Sattler, contact Bonnie at 619-265-1662 bjs7813@aol.com E5A
Explore the neighborhood of Burlingame known for fine craftsman and Spanish style homes. Meet at the corner of Dale and Upas Streets (Thomas Bros 1269, E6). Optional coffee/brunch afterwards at Cardamom Cafe.

 **JAN 25, SUN, 1 PM, VOLLEYBALL**

Host: Bob Hanson 619-287-7844 Everyone is welcome. We have 2 nets, one for advanced play, and the other for everyone. Come enjoy the sun, fun, fresh air and a little friendly competition at De Anza Cove. Directions: I-5 to Clairemont Dr., A few hundred feet west is Mission Bay Dr., turn right. Go to the next stop sign, turn left into the parking lot. We'll be on the grass past the NW corner of the parking lot. Look for the Sierra club banner.

 **JAN 28, WED, 6:30 PM COWLES MOUNTAIN 6:30 HIKE FROM MESA ROAD**

Leader: Diane Purkey 619-865-8598 - Assistant: Robert Burroughs M5C
Night hike! No hat, no sunscreen. Learn about the chaparral world by flashlight. Bring hiking boots, a light jacket, flashlight, water and a munchie. Call for required signup. Leave word how late in the evening I can return your call. Main chapter event.

Coming events-

 **FEB 1, SUN, 1 PM, VOLLEYBALL**

Host: Bob Hanson 619-287-7844 Everyone is welcome. We have 2 nets, one for advanced play, and the other for everyone. Come enjoy the sun, fun, fresh air and a little friendly competition at De Anza Cove. Directions: I-5 to Clairemont Dr., A few hundred feet west is Mission Bay Dr., turn right. Go to the next stop sign, turn left into the parking lot. We'll be on the grass past the NW corner of the parking lot. Look for the Sierra club banner.

 **FEB 2, MON, 6:30-7:30PM SIERRA SINGLES ORIENTATION**

A great way to find your niche in the club- Presentation features Sierra Singles events and activities. Discussion of activities and questions answered. No reservations needed. For more info, call E. L. Lotecka, elguide1@gmail.com , 760.533.2725 Volunteer opportunities available! SerraMesa-KearnyMesa Branch Library, 9005 Aero Dr., San Diego CA 92123. Newcomers welcome



FEB 6, FRI, 6 PM POTLUCK AND MOVIE: "KILOWATT OURS; A PLAN TO RE-ENERGIZE AMERICA" Potluck 6pm & Movie 630pm Filmmaker Jeff Barrie challenges us to trace the wires from our light switches to their energy source. He travels across the US searching for solutions to our energy problems and finds examples of power companies, schools, businesses and individuals who have found ways to meet their energy needs using conservation and green power. Chapter HQ – 8304 Clairemont Mesa Blvd. #101 (We have a zero waste policy so please bring your own non-disposable plate, cup, napkin, and utensils; pack it in & pack it out) Sponsor: International Committee Contact: Jean Costa 619-463-0721 Main Chapter event.



FEB 8, SUN, 1 PM, VOLLEYBALL
Host: Bob Hanson 619-287-7844 Everyone is welcome. We have 2 nets, one for advanced play, and the other for everyone. Come enjoy the sun, fun, fresh air and a little friendly competition at De Anza Cove. Directions: I-5 to Clairemont Dr., A few hundred feet west is Mission Bay Dr., turn right. Go to the next stop sign, turn left into the parking lot. We'll be on the grass past the NW corner of the parking lot. Look for the Sierra club banner.



FEB 9, MON, 6:30-7:30PM SIERRA SINGLES BOARD MEETING
All interested persons and members are welcome! This is a new location; 8304 Clairemont Mesa Blvd., Room 105, 1 block west of 163 interchange on the north side of Clairemont Mesa Blvd. This room is next to the Main Chapter office. Board members will brown bag around 6 PM or come to the meeting at 6:30. Here's your chance to share your ideas for the Singles Section. The meeting is primarily business rather than social (but enjoyable!) No reservations needed. We need Board members, secretary, vice-chairperson, editor. Volunteers welcome willing to help several hours a month. Contact Gary at Sc9members1@aol.com for more information



FEB 11, WED, 8:30 AM WED IN MTNS - SUYCOTT WASH
Leader: Mac Downing MacDowning@yahoo.com- 858-490-0583 Assistant: Needed E8B
New hike in Mission Trails. We will stay west of Fortuna and its many steps. Enjoy the wash and views from the mesa. Bring water, lunch, and comfortable hiking shoes or boots. Meet 8:30 on the asphalt parking east end Clairemont Mesa Blvd, Thomas 1250-A1. Rain or drizzle cancels. Main Chapter event.



FEB 11, WED, THE PARK IN THE DARK: NORTH FORTUNA LOOP
Leader: Diane Purkey 619-865-8598 - Assistant: Aaron Sweeny M6C
Here's an energetic evening conditioning hike for you in Mission Trails Park. From Tierrasanta we'll start out with great views of the city lights, and then chug along at a moderate pace over the top of North Fortuna Mountain. VERY STEEP! Very rocky and very fun, and you can learn how night hiking works. Wear hiking boots and bring your flashlight. Main Chapter event.

Sierra Singles Board Members

Membership: Gary Washington, 619-708-8111, sc9members1@aol.com

Outings Chair: Doug Nolff, 858-442-8711, doug.nolff@gmail.com

Programs: Candy Brooks, 619 584 9072, escalagal@san.rr.com

Treasurer: Carol Stultz, 858 657-0502 cstultz@san.rr.com

(Acting) Chair: Gary Washington, 619-708-8111, sc9members1@aol.com

Webmaster: Doug Nolff, 858-442-8711, doug.nolff@gmail.com

Hospitality: E.L. Lotecka, 760-533-2725, elguide1@gmail.com

Conservation: Melody Eues, 619-334-7192, mellah222@cox.net

Editor: Open, **Secretary:** Open, **Vice Chair:** Open,

Sierra Singles Website: <http://www.sandiego.sierraclub.org/singles>

Carpool Information:

Grossmont / La Mesa: Drive east on I-8, exit Jackson Drive and turn left. At the next light, turn right to Murray Drive. From I-8 west, exit Jackson Drive and go straight across the intersection. The Park & Ride is next to the Red Lobster Restaurant (do not park in the restaurant's half of the lot).

Mission Valley: Take I-8 to the Qualcomm Way off-ramp. Go west on Camino de la Reina. Park on Camino del Este near Camino de la Reina. Meet near the NE corner of Camino del Este and Camino de la Reina.

La Jolla: From I-5, exit Gilman Dr and turn west. To get to the lot, make a U-turn on Gilman and the lot will be on your right before the southbound on-ramp to I-5.

El Cajon (old): Meet on the southwest corner of Second St and Oakdale Ave. Take I-8 to Second Street exit. Go south one block to Oakdale Avenue. Park on Oakdale. (This El Cajon location has become crowded; many prefer to use the newer Los Coches facility.)

El Cajon: Take I-8 to Los Coches Road. Exit south and then left on Camino Canada. Thomas Bros. 1252, 1-D, 2001

Mira Mesa: From I-15, go west at Mira Mesa Blvd. Take the first right into the Park & Ride lot. From eastbound Mira Mesa Blvd, turn left (north) on Westview Pkwy and immediately right; drive past the north side of Best Buy.

Rancho Penasquitos: Take I-15 to Rancho Peñasquitos Blvd/Poway Rd exit. Go one block west on Rancho Peñasquitos Blvd. The Park & Ride is on the south (left) side of the street behind the Unocal 76 gas station.

Trip Grading System: **The first letter shows the general difficulty of the trip.**

E – Easy: Anyone in reasonable condition can do this trip.

M – Moderate: You must be in good shape, and previous hiking experience is recommended.

H – Hard: You should have comfortably done several moderate trips before tackling this. Look carefully at the mileage and elevation gain.

S – Strenuous: Talk about this trip with the leader. A fast pace may be required, besides other challenges.

V -Very Strenuous: This is for very experienced hikers. You may encounter difficult terrain. Don't try it until you are ready.

The number after the first character is the distance in miles (on multiple day trips it is for the longest day). For instance, M9B is a moderate 9-mile hike.

The last letter shows the elevation gain. For multi-day trips, the grade is the day with the most elevation gain. For example H12D is a hard 12-mile hike with a 2,000-3,000 foot gain:

A - Less than 500 feet gain C - 1000 to 2000 feet gain

E - more than 3000 feet gain

B - 500 to 1000 feet gain D- 2000TO 3000 feet gain

Advance reservations are required when a “***” appears in the header or when the write-up states to contact the leader.

A quick reminder --any member may sponsor events (not hikes) and list them in *The Happenings*. Please send the event to escalagal@san.rr.com for publication. Hikes should be sent to doug.nolff@gmail.com

Singles Board open positions: job descriptions:

Section 1. The vice chairperson shall preside at all Board and Singles Sections monthly events (in the absence of the chairperson) (also known as general meetings;) call special Board meetings as necessary, appoint standing and/or special committees as necessary, and exercise such powers as ordinarily accompany the office of Chairperson.

Section 4. The Secretary shall keep records of the proceedings of the Board meetings and distribute minutes to Board members and the Chapter Office and generate other correspondence as required. The Secretary shall archive all Sierra Singles Board minutes and correspondence for a minimum of five (5) years.

Section 8. The Editor shall cause to have published and sent on a regular basis to each member of the Section a newsletter listing all activities and outings of the Section (also weekly updates). The Editor shall work with Treasurer and Chairperson in the negotiation of costs for the printing and mailing of the newsletter. The Editor shall archive the Section newsletter for a minimum of five (5) years. The Editor is encouraged to attend the Hi Sierran Committee meeting.

You may subscribe to the Sierra Singles' "The Happenings" for one year without Sierra Club membership. Both print copy and email editions are available. To renew after one year, you **must** be a Sierra Club member or join along with your Singles Section renewal. "**Fees paid to Sierra Singles and to Sierra Club are NOT tax deductible as charitable contributions**" To join Sierra Club now, please include the Sierra Club form (bottom) and a **SEPARATE** check payable to "**Sierra Club**" in the appropriate amount.

SIERRA SINGLE'S The Happenings! MEMBERSHIP FORM (Does not include Sierra Club, San Diego Chapter membership.)

Name _____ Address _____

City _____, CA Zip _____ Phone _____

Email _____ how did you hear about us? _____

Membership Categories: (New or Renewal) Paper Version - \$17 Email Version - \$10

Email version sent by blind copy to preserve your privacy. Include your email address if you want to get the all the activity updates that are not in the newsletter. * **ALL** renewal memberships **MUST** include proof of current Sierra Club membership: preferably a copy of your membership card clearly showing expiration date or an address label from a current Hi Sierran or Sierra magazine (along with enough of the front page to show the issue date). Includes subscription to Sierra

*Make check payable to: **SIERRA SINGLES, Box 710414, San Diego, CA 92171-0414***

SIERRA CLUB MEMBERSHIP APPLICATION Includes subscription to Sierra magazine, \$7.50, and Chapter publications \$1 Name _____ **W0550**

Address _____ City, _____, CA

Zip _____ Phone _____

E mail address _____ Membership categories Introductory: \$25

Supporting \$75; Regular \$39; Contributing \$100; Senior/Student \$24; Life Member: \$1000

Limited Income: \$24 *Make check payable to: **SIERRA CLUB Box 710414, San Diego, CA 92171-0414***

**SIERRA CLUB, SAN DIEGO CHAPTER
SINGLES SECTION
P.O. BOX 710414
SAN DIEGO, CA 92171-0414**

JANUARY 2009, THE HAPPENINGS! Post-Consumer Recycled Paper/Soy-Based Ink Vol. 26, No.1