

The Happenings!

December 2008, Volume 25, Issue 9



Sierra Club -- San Diego Chapter Singles Section

From the Board:

Sierra Singles welcomes Melody Eues as the new Conservation Chairperson on the Singles' Board. She has already become actively involved with the Main Chapter and reports that, "...whale watching trips are planned with the Sierra Club for 1/31, 2/15 and sometime in March. More information will be available on the website in the near future" We are very happy to have Melody join the Board. There are still 3 vacant positions.

Remember Saturday, December 13 is the Annual Holiday Party!!! COLs & event leaders w/ 4 hikes/events in 2008 (plus the SS Board) will get into the Christmas Party for free!! Gary Washington, Acting Chairman

NOV 30, SUN, 1PM,

VOLLEYBALL

Host: Bob Hanson 619-287-7844 Everyone is welcome. We have 2 nets, one for advanced play, and the other for everyone. Come enjoy the sun, fun, fresh air and a little friendly competition at De Anza Cove. Directions: I-5 to Clairemont Bay Dr. West 1 block to Mission Bay Dr, turn right. Go to the next stop sign and turn left into the parking lot. We'll be on the grass past the NW corner of the parking lot. Look for the Sierra Club banner.

DEC 1, MON, 6:30-7:30PM

SIERRA SINGLES ORIENTATION

A great way to find your niche in the club- Presentation features an overview of Sierra Singles' events and activities. Discussion of activities and questions answered. No reservations needed. For more info, call E. L. Lotecka, elguide1@gmail.com 760.533.2725 Volunteer opportunities available! SerraMesa-KearnyMesa Branch Library, 9005 Aero Dr., San Diego CA 92123. Newcomers welcome

DEC 3, WED, 6:30 EVENING HIKE

COWLES MOUNTAIN

Leader: Diane Purkey 619-865-8598 Assistant: Christine Driscoll (M7C)
Take a quick, fun hike up the Big Rock side of San Diego's highest point. Learn about the chaparral world by flashlight. Bring hiking boots, a light jacket, flashlight, water and a munchie. Call for required signup, and leave word how late in the evening I can return your call Main Chapter event.

DEC 3, WEDS,

WEDS IN MTNS, SOUTH BOUNDARY

Leader: Mac Downing MacDowning@Yahoo.com 858-490-0583 Assistant: Needed (M8B)
View fire recovery in Cuyamacas. Open varied terrain, with views to west and south. Bring water, walking shoes or boots, lunch. Meet 9 am at East Mesa asphalt parking on Hwy 79, 3.6 miles north of old 80, Thomas 1216-E4. MV car pool leaves 8:00. Rain cancels. Main Chapter event.



**DEC 5, FRI, 6:30 PM,
HOOK”**

POTLUCK AND MOVIE, SILENT FOREST- “FISH

Contact: Jean Costa 619-463-0721

The seal tours California’s kelp forests from holdfast to canopy, introducing its inhabitants and predators. Chapter HQ – 8304 Clairemont Mesa Blvd. #101 (We have a zero waste policy so please bring your own non-disposable plate, cup, napkin, and utensils; pack it in & pack it out) Sponsor: International Committee



DEC 6, SAT,

VILLAGER PEAK

Leader: Jim Jafolla JimJafolla@cox.net (email preferred 619-972-1648 Assistant: Susan McFetridge S14E

Join us for an early season desert romp! Hike from the desert floor to this 5756' desert peak. We'll come upon several Indian "sleeping circles" and pass along the edge of a spectacular drop-off overlooking Clark Valley on the way up. This popular desert peak in the Santa Rosa Mountains has beautiful views at the summit. Must be in good physical condition. Contact leader for details and required signup. Main Chapter event

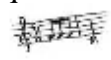


DEC 6, SAT,

BOW WILLOW/ROCKHOUSE CANYON LOOP

Leader: Diane Purkey 619-865-8598 - Assistant: Christine Driscoll (H8C)

Call this Desert Hiking 101. From Bow Willow canyon and up along a high white-sand wash, we'll scramble cross-country down to the old rockhouse to study the history of cattle ranching by its relics. Then up and over a rocky little pass on Indian trail to return by the wash in Bow Willow. Fast paced. Wear sturdy boots and bring 3 quarts of water. Main Chapter event.



DEC 6, SAT, 7:30PM

HOUSE CONCERT: TIM FLANNERY & THE ENABLERS

Host: Carol Branch 858-452-1539 wonderwoman@san.rr.com Co-host: Jeff Thayer

TYPE OF MUSIC: Americana, Folk Music. Guest artists will include Tim’s brother Tom from Kentucky, Barbara Nesbitt and Dennis Caplinger. These are some of the finest musicians in San Diego County. Tim is a legend in San Diego in both baseball and folk music circles. Tim and Tom have been singing together since childhood; Barbara is well known by many of you as one of the finest songwriters in San Diego with one of the best voices in town to go with it. Dennis Caplinger must be heard to be believed. He is a world class virtuoso on at least 5 instruments that I know of and probably some that I don’t. They will put on a great show for you. You will love the intimate setting of the private home venue. Doors open at 7; music starts promptly at 8. Finger food snacks and beverages provided. Potluck contributions are optional. Recommended donation: \$20.00 at the door. CASH ONLY, PLEASE. CD’s will be available for purchase. Reservations required. Call or e-mail for reservations and details. Performer’s website: www.timflannery.com



DEC 7, SUN, 1PM,

VOLLEYBALL

Host: Bob Hanson 619-287-7844 Everyone is welcome. We have 2 nets, one for advanced play, and the other for everyone. Come enjoy the sun, fun, fresh air and a little friendly competition at De Anza Cove. Directions: I-5 to Clairemont Bay Dr. West 1 block to Mission Bay Dr, turn right. Go to the next stop sign and turn left into the parking lot. We'll be on the grass past the NW corner of the parking lot. Look for the Sierra Club banner.



**DEC 8, MON, NO SIERRAN SINGLES BOARD MEETING...
JANUARY**

NEXT MEETING in



DEC 13, SAT,

URBAN GREEN HIKE 4

Leader: Susan McFetridge orangedishsoap@gmail.com or 619-818-4971- Assistant: Kaustuv Datta M8B

Explore what's close-in with little/no driving if you're an urban dweller or discover the city if you live in the suburbs. Check out neighborhood holiday decorations, great old houses & the urban landscape in Middle Town, Mission Hills, Old Town & Hillcrest. Good pace over sidewalks, park & canyon trails, staircases & a bridge. Start 1:00pm. End next to good restaurants. 20s_30s Section- Main Chapter event. Sign up by Dec 10.



 **DEC 13, SAT,**

EL CAJON MTN.
H11E

Leader: Starla Rivers - Assistant: Needed

If your heels blister easily, your calves cramp, or your quads howl, this hike is not for you. If, however, you are a masochistic and fit hiker, then the 4000 feet of elevation gain and loss over the course of this hike is just what you've been looking for. Located off of Wildcat Canyon Road, this is the best workout available within easy driving distance of downtown.

Contact Starla Rivers

 **DEC 13, SAT, 6 PM-10:30PM, ANNUAL HOLIDAY PARTY!!** 

Host Candy Brooks. Please RSVP to escalagal@san.rr.com before Dec 10th.

Please bring a dish to share. One of the following = an appetizer, complement for meat, like potatoes or vegetable, salad, or a dessert. Wine, beer and soft drinks provided. **Holiday attire please.. Please wear your party clothes and your dancing shoes!** For some classic rock plus. Location: Escala clubhouse .2840


Clubhouse Lane, Mission Valley, 92108 A mere \$10.00 donation for expenses will get you in to all the fun.

Drinks and main course provided by Sierra Singles. \$10.00 at the door.

Gate code will be posted on the stone pillar at the gate. Parking permits will be issued at the door. As before, please drive to clubhouse to obtain a parking permit prior to parking your car. About 40 spaces in back of the clubhouse and additional parking on the street. *Directions: from 163 take Friars Rd. east, turn north on Fenton Parkway. Go through the gate. Clubhouse is located at the top of the hill.*

My cell phone for use day of party only, 619 261 4511

 **Let's celebrate the holiday with good friends, food and music!!!!!!** 

 **DEC 14, SUN, 1PM,**

VOLLEYBALL

Host: Bob Hanson 619-287-7844 everyone is welcome. We have 2 nets, one for advanced play, and the other for everyone. Come enjoy the sun, fun, fresh air and a little friendly competition at De Anza Cove. Directions: I-5 to Clairemont Bay Dr. West 1 block to Mission Bay Dr, turn right. Go to the next stop sign and turn left into the parking lot. We'll be on the grass past the NW corner of the parking lot. Look for the Sierra Club banner.



DEC 14, SUN,

SIPPING SIERRANS "CHAMPAGNE TASTING"


Join fellow Sierrans and friends for a festive "Champagne" tasting event on Sunday, December 14 at 3:00 pm at Wine Steals, 1243 University Ave in the San Diego community of Hillcrest.


Participants will enjoy tasting four champagnes with specially chosen nibbles. Space is strictly limited to 50 participants and of course you must be of legal drinking age. All members and their guests are invited to attend. Cost is \$30 per person in advance and will include a souvenir wine glass to take home. We need to collect payment in advance as we need to confirm attendance and are responsible for payment for the number we provide. This will cover all expenses and includes a small donation to the Chapter. Please RSVP to Richard at lostyourmarblestoo@sbcglobal.net. You will not be confirmed until we receive your payment. Once we receive your reservation request, we will confirm and provide instructions for payment. You can pay by check or charge it to your Visa or MasterCard. San Diego "Sipping Sierrans" is a social group of fellow members like you that gather on a regular basis to enjoy and learn about wines, tasty micro-brews and good food, all while having the opportunity to engage in conversation and hear about the Chapters programs. Main Chapter event


DEC 16, TUES**


MONTHLY BRIDGE NIGHT


Host: Patt Voight 619-504-7697 ncbeachbird@yahoo.com Join us for a fun night of social party bridge. Beginners welcome. Play begins at 7:00. Please call or e-mail to reserve your spot. Directions will be provided when you sign up. Limit 12


 **DEC 17, WED,** **THE PARK IN THE DARK: NORTH FORTUNA LOOP**
Leader: Diane Purkey 619-865-8598- Assistant: Christine Driscoll M6C
Here's an energetic evening conditioning hike for you in Mission Trails Park. From Tierrasanta we'll start out with great views of the city lights, then chug along at a moderate pace over the top of North Fortuna Mountain. VERY STEEP! Very rocky and very fun, and you can learn how night hiking works. Wear hiking boots and bring your flashlight. Main Chapter event


 **DEC 19, FRI, 7:30PM,** **SUSTAINABLE CITIES IN THE DESERT, THE CASE OF SAN DIEGO**
The growing awareness of very serious problems with global and local ecosystem stability and resource availability is encouraging new consideration of the sustainability of our current communities. This presentation will explore how this is particularly important for cities. San Diego, as a desert city (less rain than Tucson), faces particularly difficult challenges to become more sustainable. David A. Bainbridge was educated at the University of California, San Diego in Earth Sciences, and U.C. Davis in Ecology and Environmental. Monthly programs meet at the Joyce Beers Center at 3900 Vermont Street. Additional parking is available under Trader Joe's and Ralph's. Free and open to the public. Program Chair Mannie Kugler.

 **DEC 20, SAT, 5:30PM** **BALBOA PARK AT NIGHT**
Leader: E.L.Lotecka sdwalks@interactor.cc or 760.533.2725 Assistant Leader: Carol Stultz E5A
See the holiday lights! Night time social-paced walk through the Park's promenades, bridges and gardens. Meet at Zoo, in front of Elephant topiary, Zoo Way off Park Blvd. Parking in Zoo lot. Dinner mid-way at Mandarin House.

 **DEC 21, SUN, 1PM,** **VOLLEYBALL**
Host: Bob Hanson 619-287-7844 Everyone is welcome. We have 2 nets, one for advanced play, and the other for everyone. Come enjoy the sun, fun, fresh air and a little friendly competition at De Anza Cove. Directions: I-5 to Clairemont Bay Dr. West 1 block to Mission Bay Dr, turn right. Go to the next stop sign and turn left into the parking lot. We'll be on the grass past the NW corner of the parking lot. Look for the Sierra Club banner.

 **DEC 27, SAT,** **WHALE PEAK**
Leader: Rachel Barsman 619-733-1903 or rbarsman@hotmail.com- Assistant: Starla Rivers H8C
We'll meet in San Diego, and then carpool out to Blair Valley in the Anza Borrego Desert. As we start to climb up from the desert floor, you'll pinyon pines, Oak trees, and meadows with grass on this "Island in the Desert". It's truly a unique place and not your typical desert hike. You must be able to climb over large boulders and hike uphill at a moderate pace. Please contact the leader for more information. Main Chapter event.

 **DEC 28, SUN, 1PM,** **VOLLEYBALL**
Host: Bob Hanson 619-287-7844 Everyone is welcome. We have 2 nets, one for advanced play, and the other for everyone. Come enjoy the sun, fun, fresh air and a little friendly competition at De Anza Cove. Directions: I-5 to Clairemont Bay Dr. West 1 block to Mission Bay Dr, turn right. Go to the next stop sign and turn left into the parking lot. We'll be on the grass past the NW corner of the parking lot. Look for the Sierra Club banner.

 **DEC 31, WED,** **COWLES MOUNTAIN 6:30 HIKE FROM BARKER WAY**
Leader: Diane Purkey 619-865-8598- Assistant: Robert Burroughs M4B
Abs? What are abs? Where? Oh, they're hidden abs. Hike now, celebrate later. Join us on this fun, fast-paced evening conditioning hike up the trail less traveled to the top of Cowles Mountain. We'll cover very basic astronomy at the summit, with our great view of the night sky, then loop back down on the dirt fire road. Bring your flashlight and a light jacket. Main Chapter event.



DEC 31, WED, TO JAN 4, SUN,

NEW YEARS BEAR VALLEY SKI BUS TRIP

Leader: Coordinator: Alice Fichandler aliceandorbill@aol.com 619-226-6083 Assistant: Needed
Come join us to bring in the New Year at Bear Valley where we will be staying in condos at the ski area and enjoying 3 full days of both cross country and downhill skiing. Bear Valley is located in the Sierras between Yosemite and Tahoe in Alpine County. The area has an extensive track system, a downhill resort, and back country trails. We will have beginner and intermediate trips each day: instruction is included. We will celebrate the New Year with a progressive dinner which has been a success in previous years. Cost for the trip is approximately \$385 which includes transportation, lodging. Bus leaves at 8:30am on Dec. 31 to try to beat the traffic. To reserve a place on the trip, send a \$35 non-refundable deposit and 3 SASE's OR your e-mail address to Coordinator: Alice Fichandler, 4520 Greene St., San Diego, CA 92107. Main Chapter event.

A Glimpse forward at 2009-

JAN 1, THU, 8:30 AM SHARP!

NEW YEAR'S DAY RIDE TO THE OCEAN

Leader: Bev Barrett

(3-B-S)

Begin the New Year with friends riding from Kensington to Ocean Beach, looping around the harbor, and returning through America's Finest City. Bev, a Native, will point out 12 Neighborhoods and share origins of their names. Meet at 8:30 am at Bev and Terry's house (see directions below). Moderate 20+ miles with less than 1000 ft elevation gain. Rain cancels.

JAN 1, THU, 11 AM,

KENSINGTON NEIGHBORHOOD WALK

Leader: Bev Barrett.

(E5DA)

Meet Bev and Terry at 11:00 am. This year's walk will leave Bev and Terry's house (see directions below) in Kensington for a foot tour of this historic and beautiful S.D. neighborhood. We will continue to point out and acknowledge the neighbors who have moved to conserving water via water conserving landscaping. This is an easy walk of less than 4 miles and is flat. Bev and Terry will do their best to point out significant landmarks and to provide a little local history. Bring water, jacket (only a downpour will stop us), and wear appropriate shoes.

JAN 1, THU, 1-5 PM, CANYON

BLACK-EYED PEA AND GREEN FEED WITH A CONCERT IN THE

Join Bev, Terry and their lucky and wealthy relatives and friends for the annual New Year's Day black-eyed pea and greens feed. Bev Barrett and Terry Frey (619) 282-0425 (pls. don't phone unless you must). According to Southern Tradition eating peas and greens on the first day of the year will assure you luck and wealth. This event happens every year and brings together 100+ great human beings. Bring a beverage and a dish for the food table (lawn chair optional). We will be having music this year for a Concert in the Canyon, from 2-4 pm. An optional bike ride and a neighborhood walk will precede this event. All events for the day start at Bev and Terry's house in the Kensington neighborhood of San Diego. See directions to house written below.

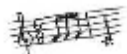
Directions to Bev and Terry's House:

All Events for the day start at Bev and Terry's House in Kensington, 4362 Argos Drive, San Diego. Call only if you must: 619 282-0425. From Highway 15 take Adams Ave Exit and proceed east to Marlborough and turn left. Proceed one block to Alder and turn right. Go several blocks and turn left on Hart. Go one block turn right on Argos you will see 4362 (white two-story house on the left side of the street WITH THE NEW SOLAR PANELS ON THE GARAGE ROOF!). Park on the street, but do not block neighbor's driveways.

JAN 5, MON, 6:30-7:30PM

SIERRA SINGLES ORIENTATION

A great way to find your niche in the club- Presentation features Sierra Singles events and activities. Discussion of activities and questions answered. No reservations needed. For more info, call E. L. Lotecka, elguide1@gmail.com , 760.533.2725 Volunteer opportunities available! SerraMesa-KearnyMesa Branch Library, 9005 Aero Dr., San Diego CA 92123. Newcomers welcome.

**JAN 10, SAT, 7:30PM****HOUSE CONCERT: THE EVE SELIS BAND**

Host: Carol Branch 858-452-1539 wonderwoman@san.rr.com Co-host: Jeff Thayer

TYPE OF MUSIC: Americana, Folk Music, Roadhouse Rock. Eve and her band are well known and loved in San Diego and abroad. Each musician in the band is a virtuoso, including two of the best guitarists in the county, and Eve's voice and original songs are unique and beautiful. **THEY ROCK!** They will put on a great show for you. You will love the intimate setting of the private home venue. Doors open at 7; music starts promptly at 8. Finger food snacks and beverages provided. Potluck contributions are optional. Recommended donation: \$20.00 at the door. **CASH ONLY, PLEASE.** CD's will be available for purchase. Reservations required. Call or e-mail for reservations and details. Performer's website: <http://www.eveselis.com>

**JAN 10, SAT,****COASTER SATURDAY TORREY PINES EXTENSION**

Ldr: Mac Downing 858 490-0583 MacDowning@Yahoo.com Asst: COL Needed M4A

Walk visits the eastern natural area saved in 1964 – 1970. Varied terrain and ocean views. Bring water, optional sack lunch, and boots or walking shoes. Meet 9 am east end of Del Mar Scenic PKWY, off Carmel Valley Road, Thomas 1207-G1. Reservations required, limited to 20, prefer Email. Rain cancels. Open to Main Chapter.

**JAN 11, SUN,****RABBIT PEAK FROM THE NORTH**

Leader: Mark Brown mrbrown@san.rr.com Assistant: Byron Cook V18E

Welcome to desert hiking season and the **SECOND ANNUAL** (this time **FULL MOON**) **RABBITT FROM THE BACK FULL THROTTLE SUFFER-FEST.** This is listed as the most strenuous hike on the HPS list. We will be going up a ridge from the "Indio" side of the mountain. Almost all cross country with relentless elevation gain (6700'). This "advanced" hike is open only to the hardest and most experienced who've gone on some of my earlier hikes and don't mind emerging from pitch blackness (oh, I forgot, that's why the moon) only to be lost in lemon groves upon returning. Main Chapter event

**JAN 12, MON, 6:30-7:30PM****SIERRA SINGLES BOARD MEETING**

All interested persons and members are welcome! This is a new location; 8304 Clairemont Mesa Blvd., Room 105, 1 block west of 163 interchange on the north side of Clairemont Mesa Blvd. This room is next to the Main Chapter office. Board members will brown bag around 6 PM or come to the meeting at 6:30. Here's your chance to share your ideas for the Singles Section. The meeting is primarily business rather than social (but enjoyable!) No reservations needed. We need Board members, secretary, vice-chairperson, editor. Volunteers welcome willing to help several hours a month. Contact Gary at Sc9members1@aol.com for more information.

**JAN 13 (MISSION VALLEY, \$130), or JAN 20, (ESCONDIDO, \$100), WILDERNESS BASICS****COURSE**

This comprehensive 10-week course consists of 10 Tuesday night meetings and 4 weekend trips out to the local deserts and mountains. The weekend trips includes car camping, navigation, backbacking, and even snow camping. There are a wide range of trips to choose from, ranging from easy to extremely challenging. For more information visit www.wildernessbasics.com or <http://sandiego.sierraclub.org/wbc> or call Lance at 858.467.5074 (Mission Valley classes) or Jeff at 760.728.8220, (Escondido classes) Main chapter event.

**JAN 17, SAT****FIFTH ANNUAL HIKER'S MARATHON**

Leader: Jim Jafolla JimJafolla@cox.net (email preferred) 619-972-1648 Assistant: Susan McFetridge S25D

Work off those holiday carbs with a hiker's marathon! We'll start at dawn in Pine Valley and take the Noble Canyon Trail to Sunrise Hwy and then follow the PCT to Garnet Peak. This will be a brisk-paced hike so we can make it back to our cars by dusk. Bring 3 quarts water, lunch, warm clothes and sturdy shoes. Limit 12. Main Chapter event.

Sierra Singles Board Members

Membership: Gary Washington, 619-708-8111, sc9members1@aol.com

Outings Chair: Doug Nolff, 858-442-8711, doug.nolff@gmail.com
Programs: Candy Brooks, 619 584 9072, escalagal@san.rr.com
Treasurer: Carol Stultz, 858 657-0502 cstultz@san.rr.com
(Acting) Chair: Gary Washington, 619-708-8111, sc9members1@aol.com
Webmaster: Doug Nolff, 858-442-8711, doug.nolff@gmail.com
Hospitality: E.L. Lotecka, 760-533-2725, elguide1@gmail.com
Conservation: Melody Eues, 619-334-7192, mellah222@cox.net
Editor: *Open*, **Secretary:** *Open*, **Vice Chair:** *Open*,
Sierra Singles Website: <http://www.sandiego.sierraclub.org/singles>

Carpool Information:

Grossmont / La Mesa: Drive east on I-8, exit Jackson Drive and turn left. At the next light, turn right to Murray Drive. From I-8 west, exit Jackson Drive and go straight across the intersection. The Park & Ride is next to the Red Lobster Restaurant (do not park in the restaurant's half of the lot).

Mission Valley: Take I-8 to the Qualcomm Way off-ramp. Go west on Camino de la Reina. Park on Camino del Este near Camino de la Reina. Meet near the NE corner of Camino del Este and Camino de la Reina.

La Jolla: From I-5, exit Gilman Dr and turn west. To get to the lot, make a U-turn on Gilman and the lot will be on your right before the southbound on-ramp to I-5.

El Cajon (old): Meet on the southwest corner of Second St and Oakdale Ave. Take I-8 to Second Street exit. Go south one block to Oakdale Avenue. Park on Oakdale. (This El Cajon location has become crowded; many prefer to use the newer Los Coches facility.)

El Cajon: Take I-8 to Los Coches Road. Exit south and then left on Camino Canada. Thomas Bros. 1252, 1-D, 2001

Mira Mesa: From I-15, go west at Mira Mesa Blvd. Take the first right into the Park & Ride lot. From eastbound Mira Mesa Blvd, turn left (north) on Westview Pkwy and immediately right; drive past the north side of Best Buy.

Rancho Penasquitos: Take I-15 to Rancho Peñasquitos Blvd/Poway Rd exit. Go one block west on Rancho Peñasquitos Blvd. The Park & Ride is on the south (left) side of the street behind the Unocal 76 gas station.

Trip Grading System: **The first letter shows the general difficulty of the trip.**

E – Easy: Anyone in reasonable condition can do this trip.

M – Moderate: You must be in good shape, and previous hiking experience is recommended.

H – Hard: You should have comfortably done several moderate trips before tackling this. Look carefully at the mileage and elevation gain.

S – Strenuous: Talk about this trip with the leader. A fast pace may be required, besides other challenges.

V -Very Strenuous: This is for very experienced hikers. You may encounter difficult terrain. Don't try it until you are ready.

The number after the first character is the distance in miles (on multiple day trips it is for the longest day). For instance, M9B is a moderate 9-mile hike.

The last letter shows the elevation gain. For multi-day trips, the grade is the day with the most elevation gain. For example H12D is a hard 12-mile hike with a 2,000-3,000 foot gain:

A - Less than 500 feet gain **C - 1000 to 2000 feet gain**

E - more than 3000 feet gain

B - 500 to 1000 feet gain **D- 2000TO 3000 feet gain** Advance reservations are required when a "***" appears in the header or when the write-up states to contact the leader.

A quick reminder --any member may sponsor events (not hikes) and list them in *The Happenings*. Please send the event to escalagal@san.rr.com for publication. Hikes should be sent to doug.nolff@gmail.com

Singles Board open positions: job descriptions:

Section 1. The vice chairperson shall preside at all Board and Singles Sections monthly events (in the absence of the chairperson) (also known as general meetings;) call special Board meetings as necessary, appoint standing and/or special committees as necessary, and exercise such powers as ordinarily accompany the office of Chairperson.

Section 4. The Secretary shall keep records of the proceedings of the Board meetings and distribute minutes to Board members and the Chapter Office and generate other correspondence as required. The Secretary shall archive all Sierra Singles Board minutes and correspondence for a minimum of five (5) years.

Section 8. The Editor shall cause to have published and sent on a regular basis to each member of the Section a newsletter listing all activities and outings of the Section (also weekly updates). The Editor shall work with Treasurer and Chairperson in the negotiation of costs for the printing and mailing of the newsletter. The Editor shall archive the Section newsletter for a minimum of five (5) years. The Editor is encouraged to attend the Hi Sierran Committee meeting.

You may subscribe to the Sierra Singles' "The Happenings" for one year without Sierra Club membership. Both print copy and email editions are available. To renew after one year, you **must** be a Sierra Club member or join along with your Singles Section renewal. "**Fees paid to Sierra Singles and to Sierra Club are NOT tax deductible as charitable contributions**" To join Sierra Club now, please include the Sierra Club form (bottom) and a **SEPARATE** check payable to "**Sierra Club**" in the appropriate amount.

SIERRA SINGLE'S The Happenings! MEMBERSHIP FORM (Does not include Sierra Club, San Diego Chapter membership.)

Name _____ Address _____

City _____, CA Zip _____ Phone _____

Email _____ how did you hear about us? _____

Membership Categories: (New or Renewal) Paper Version - \$17 Email Version - \$10

Email version sent by blind copy to preserve your privacy. Include your email address if you want to get the all the activity updates that are not in the newsletter. * **ALL** renewal memberships **MUST** include proof of current Sierra Club membership: preferably a copy of your membership card clearly showing expiration date or an address label from a current Hi Sierran or Sierra magazine (along with enough of the front page to show the issue date). Includes subscription to Sierra

*Make check payable to: **SIERRA SINGLES, Box 710414, San Diego, CA 92171-0414***

SIERRA CLUB MEMBERSHIP APPLICATION Includes subscription to Sierra magazine, \$7.50, and Chapter publications \$1 Name _____ **W0550**

Address _____ City, _____, CA

Zip _____ Phone _____

E mail address _____ Membership categories Introductory: \$25

Supporting \$75; Regular \$39; Contributing \$100; Senior/Student \$24; Life Member: \$1000

Limited Income: \$24 *Make check payable to: **SIERRA CLUB Box 710414, San Diego, CA 92171-0414***

SIERRA CLUB, SAN DIEGO CHAPTER
SINGLES SECTION
P.O. BOX 710414
SAN DIEGO, CA 92171-0414

DECEMBER, 2008 THE HAPPENINGS! Post-Consumer Recycled Paper/Soy-Based Ink Vol. 25, No.9