

### About Us:

The Photography Section of the San Diego Chapter of the Sierra Club is a group of hobbyist-photographers of all levels who meet monthly to learn more about photography.

Meetings feature a speaker from the local photographic community and are held on the 2nd Thursday of the month at the Otto Center at the San Diego Zoo, located at the Southeast corner of the Zoo, to the left of the main entrance. There is no charge to attend. We welcome new members! To join, pick up a membership application at any of the meetings, or call

Everett Mehner at 619-232-9271 to request an application, or send your name, address, telephone number, and check to the address below. Annual membership is \$20 and includes a subscription to this publication, The VIEW Finder.



**Sierra Club  
Photography Section**  
c/o E. Mehner  
2510 Horton Ave.  
San Diego, CA 92101-1350

Please check your mailing label for your subscription expiration date. An asterisk indicates your last issue. Please renew before expiration. We do not bill.

**Thank you for  
Your membership!**

### Thank You To Our Sponsors! Please Support Them.

**Jim Cline  
Photo Tours**  
858.350.1314  
Jimcline.com

**Chrome Digital**  
2345 - B Kettner Blvd,  
San Diego 92101  
619.233.3456  
Chromedigital.com

**Chrome Digital**  
6150 Lusk Blvd. #B104  
San Diego, CA 92121  
858.452.1500  
Chromedigital.com

**Moebius Digital  
Color Studio**  
5764 Pacific Center Blvd.  
#101  
San Diego, CA 92121  
858.450.4486  
Moebiuscolor.com

**Images Preserved**  
www.images-  
preserved  
Toll free  
866.713.7322

**Nelson Photo**  
1909 India St.  
San Diego, CA 92121  
619.234.6621  
Nelsonphotosupplies.  
com

**Sponsorships Available.  
For more information, contact Carol Brody at  
(619) 466-3371**

First Class Mail

# The VIEW Finder



Sierra Club

Photography Section

San Diego Chapter

**June 2005**

## Cathy Scholl

Documentary Travel Photography and Portraits from India and Myanmar

**Thursday • June 9, 2005 • 6:30 p.m. (doors open)**

**Meeting starts at 7:00 p.m.**

*As a teenager Cathy Scholl had an interest in Equine and Surfing Photography. While on a Spiritual journey to India in 1995 she rediscovered her passion for photography and now specializes in Documentary travel photography and portraits.*



*Since 1995 there have been 10 trips to India, as well as many other countries, continued studies in photography and many exhibitions and awards. The initial attraction in photographing distant lands and vanishing cultures was the obvious ... enjoying and sharing the vibrant colors, unusual customs and costumes as well as providing an artistic record of these cultures in order to help preserve them.*

*Beyond that, the camera has provided Cathy with the opportunity to connect closely with her subjects. What she has discovered and strives to portray in her images is the universality of human experience in spite of obvious differences. To see some of her images visit: <http://www.photo.net/photos/CathyScholl>*

## Calendar Of Events

See our Website for the most up-to-date activities schedule:  
[www.sdphotoclub.com](http://www.sdphotoclub.com)

### June 2005

**Monthly Meeting:** Cathy School: Thursday, June 9th, 6:30 pm (doors open). Mtg starts at 7PM.

### July 2005

**Monthly Meeting:** Thursday, July 14th, 6:30 pm (doors open). Mtg starts at 7PM.

### August 2005

**Monthly Meeting:** Thursday, August 11th, 6:30 pm (doors open). Mtg starts at 7PM.

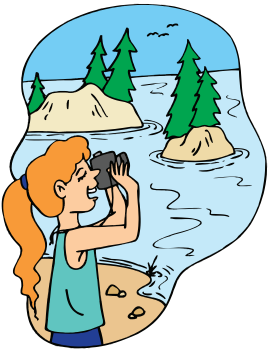
#### Outings Ideas and Leaders Needed:

*So what is an outing? Any place you would like to photograph and would like some company.*

*Each outing need a "contact" person to take the names and phone numbers of participants and decide on a meeting time and location. It is easy. Here's your chance to get involved.*

*It's fun and you get to meet a lot of photographers who have many, many good tips.*

*So you have an idea for an outing? Contact Ken Rockwell at 858.453.2099 or [ken@kenrockwell.com](mailto:ken@kenrockwell.com) for information.*



## Officers & Volunteers

### Chair:

Jonathan Fennell - (619) 861-7873  
[jfennell@jdfusions.com](mailto:jfennell@jdfusions.com)

### Membership/Equipment Manager:

Everett Mehner - (619) 232-9271 or  
[ecmehner@cox.net](mailto:ecmehner@cox.net)

### Treasury & Sponsors:

Carol Brody - (619) 466-3371 or  
[cbrody8000@cox.net](mailto:cbrody8000@cox.net)

### Programs:

Karl Grobl  
(858) 689-1963 or [karl@karlgrobl.com](mailto:karl@karlgrobl.com)  
Jim Cline  
(858) 350-1314 or [jim@jimcline.com](mailto:jim@jimcline.com)

### SCPS Webmaster & Activities:

Ken Rockwell - (858) 453-2099 or  
[ken@kenrockwell.com](mailto:ken@kenrockwell.com)

### Hospitality:

Karen LeCates - (619) 322-6818 or  
[karenlecatess@hotmail.com](mailto:karenlecatess@hotmail.com)

### Refreshments:

Theresa Verneti - (619) 298-9838 or  
[tvernett@yahoo.com](mailto:tvernett@yahoo.com)

### Newsletter:

Rita Spiegel - (858) 569-7414 or  
[rita520@sbcglobal.net](mailto:rita520@sbcglobal.net)

### For Sale:

*Mamiya Pro TL with Equipment for sale.*

*Mamiya body with 80mm 2.8 lens, 55mm 2.8 lens, 150mm 3.5 lens, Power Drive Grip WG402, AE Prism Finder FE 401, 120, 220 & Polaroid backs, Set of Extension Tubes, Angle Finder, External Battery Case, Flash Adapter, Cable Release Adapter RC 402, and extra 120 & 220 film inserts.*

*All instruction manuals and some original boxes. Camera recently overhauled. Over \$7,500 value new. Will sell everything for \$3,200. Carol Murdock at [1mtnmom@cox.net](mailto:1mtnmom@cox.net) or 619-749-2467.*

## Member Share Digital Guidelines

With more and more members sharing their digital images, we have discovered a few "techo" glitches we need to smooth out. So with that, here are a few guidelines. Thank you for your assistance. With your help the sharing portion of the meetings will flow much smoothly.

1. Please arrive at 6:30 p.m. It takes time to load the images on the computer. The meeting starts at 7:00 and we need all the images ready to go.
2. Members may bring up to 12 images maximum. Please don't bring additional slides. We have limited time available at the Otto Center. Please be mindful of the amount of time used to talk about your images.
3. Burn a CD with JPGs only. Please label them with your last name (first) and number. Example: Jones1, Jones2, Jones3. This will allow them to be shown in order by artist. Limit file size to 1024w x 768h.

## Exhibit at the Sierra Club

The Sierra Club, San Diego Chapter has space available to highlight the work of the Photo Club's artists. Here is a description of the requirements to submit your work.

The Sierra Club works together to select the best images for the space we have. The photographers need to provide a price list or put the price somewhere visible on their work, which includes a 30% mark-up for the club. A second list is needed as an inventory tool that we keep by the cash register including the marked up prices. For any works that are sold, we can settle piece by piece or at the end of the exhibition. The exhibitions typically last a month. (An exhibition consists of around 4 - 10 pieces, depending on size ... we have so much clutter here that simpler is more to the displays advantage). I look forward to seeing some work! To learn more or to exhibit your work, contact:

Martha Bertles, San Diego Sierra Club  
(619) 299-1743



## Announcements

### The Ordover Gallery

The photographic artistry of Art Wolfe's work has inspired, informed and educated people around the world for over 25 years. July 21 through Sept. 9.

Artists' Reception Thurs., July 21st from, 6 - 8:30 pm. Studio 172, 444 S Cedros, in the Design District of Solana Beach. 858.720.1121. [www.ordovergallery.com](http://www.ordovergallery.com)

### City of La Mesa 2006 Calendar

Congratulations to Sierra Club Photo Section member Rita Spiegel who was awarded the project of photographing the City's 2006 calendar.

The calendar is due to be completed by October 2005 and will be mailed to all La Mesa residents.